



**SUBMITTAL DATA – FAN COIL  
LIHP048000T431E - LIFHC048021T431E-1  
SINGLE ZONE INVERTER MINI-SPLIT HEAT PUMP**

Job: \_\_\_\_\_  
Location: \_\_\_\_\_  
Schedule No.: \_\_\_\_\_  
System Designation: \_\_\_\_\_

Engineer: \_\_\_\_\_  
Architect: \_\_\_\_\_  
Date: \_\_\_\_\_

**FEATURES**

Outdoor Unit: **LIHP048000T431E**  
Outdoor Unit Cat Number: **Y8358**



- DC ODU Motor
- Golden Fin

Indoor Unit: **LIFHC048021T431E-1**  
Indoor Unit Cat Number: **Y8915**



- Auto Restart
- DC IDU Motor
- Washable Filter Included
- Wireless Control Included
- Wired Control Included

**PIPING**

Line Set and Elevation Guidelines

Maximum Line Set Length ft. (m)	213.2 ft. (65 m)
Maximum Elevation - Outdoor Unit Below/Above Indoor Unit ft. (m)	98.4 ft. (30 m)
Liquid Line Set Diameter (in.)	3/8"
Gas Line Set Diameter (in.)	5/8"

**PRODUCT WARRANTY**

5 Year Limited Warranty\*

**OPTIONAL ACCESORIES**



**NOTE** – Due to Lennox' ongoing commitment to quality, Specifications, Ratings, and Dimensions are subject to change without notice and without incurring liability. Improper installation, adjustment, alteration, service or maintenance can cause property damage or personal injury. Installation and service must be performed by a qualified installer and servicing agency



**SUBMITTAL DATA – FAN COIL**  
**LIHP048000T431E - LIFHC048021T431E-1**  
**SINGLE ZONE INVERTER MINI-SPLIT HEAT PUMP**

**OUTDOOR SPECIFICATIONS**

<b>PERFORMANCE</b>	
Cooling Capacity (Btu/h)	48,000
EER(W/W)	2.76
ESEER(BTUH/W)	20.8
Heating Capacity (Btu/h)	55,000
SCOP	4.0
<hr/>	
Outdoor Fan Total Air Volume (CFM)	4,000
<b>Ambient Temperature Operating Range</b>	
Cooling	5°F(-15°C) - 122°F(50°C)
Heating	5°F(-15°C) - 75°F(24°C)
<b>ELECTRICAL DATA</b>	
Power Supply (V/Hz/ϕ)	220-240/50/1
Minimum Circuit Ampacity (A)	/
Maximum Overcurrent Protection (A)	/
Outdoor Fan Motor RLA (A)	1.08
Compressor RLA (A)	6.85
No. of Compressors	1

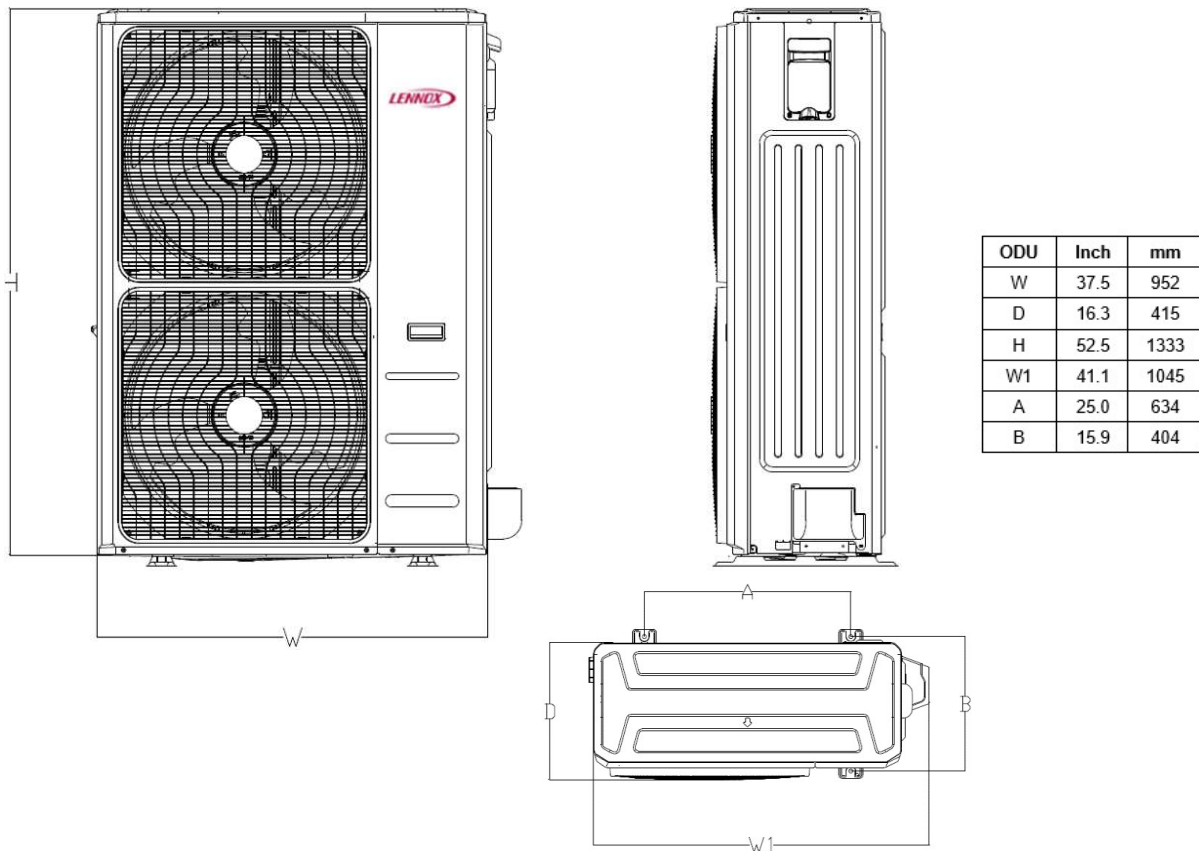
<b>GENERAL DATA</b>	
Connection Ratio (%)	100%
Max. # of Indoor Units	1
Sound Data (dBA) - Cooling/Heating	65
Refrigerant type	R-410A
Factory refrigerant charge	8.8 lbs. 140.8 oz.

<b>DIMENSIONS</b>		
Unit Dimensions (in)	Height	52.5
	Width	37.5
	Depth	16.3
<hr/>		
Shipping Weight (lb)		239
Net Weight (lb)		210

**NOTES**

Cooling and Heating Capacity data is rated at the following conditions:  
 Cooling: 80°FDB / 67°FWB Indoor, 95°FDB/ 75°FWB Outdoor  
 Heating: 70°FDB / 60°FWB Indoor, 47°FDB/ 43°FWB Outdoor

**OUTDOOR DIMENSIONAL DRAWINGS - INCHES (MM)**



**NOTE** – Due to Lennox' ongoing commitment to quality, Specifications, Ratings, and Dimensions are subject to change without notice and without incurring liability. Improper installation, adjustment, alteration, service or maintenance can cause property damage or personal injury. Installation and service must be performed by a qualified installer and servicing agency



**SUBMITTAL DATA – FAN COIL  
LIHP04800T431E - LIFHC048021T431E-1  
SINGLE ZONE INVERTER MINI-SPLIT HEAT PUMP**

**INDOOR SPECIFICATIONS**

PERFORMANCE		
Airflow (CFM)	Turbo	/
	High	1413
	Medium	1200
	Low	988
External Static Pressure (Pa)		50
Sound Pressure (dBA)	Turbo	/
	High	51
	Medium	50
	Low	48

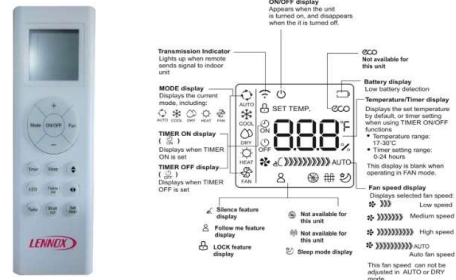
ELECTRICAL DATA	
Power Supply (V/Hz/φ)	220-240/50/1
Rated load amps (RLA)	4.1
Power Output (W)	560

DIMENSIONS		
Unit Dimensions (in)	Height	11.8
	Width	47.2
	Depth	34.4
Unit Net/Shipping Weight (lb)		104.7/122.8

**WIRELESS REMOTE CONTROLLER SPECIFICATIONS**

21F34 (RG66A1/BGEF)	
Power Supply	2 AAA Batteries (Included)
Setpoint Range	62°F(17°C) - 86°F(30°C)
Effective Receiving Range	26 ft.(8m)

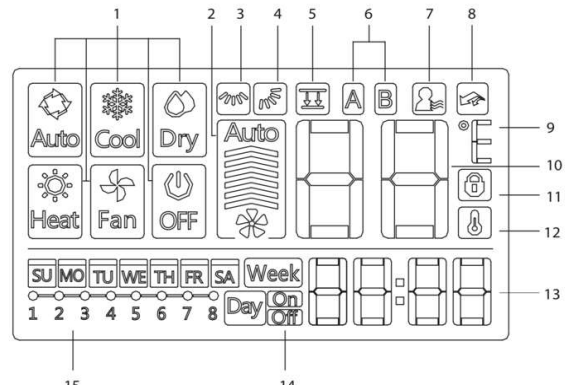
**DISPLAY**



**WIRED CONTROLLER SPECIFICATIONS**

21F37 (KJR-120G2/TFBG-E-02)	
Power Supply	DC 12V, Supplied by IDU
Setpoint Range	62°F(17°C) - 86°F(30°C)
Effective Receiving Range	65 ft.(20m)

**DISPLAY**



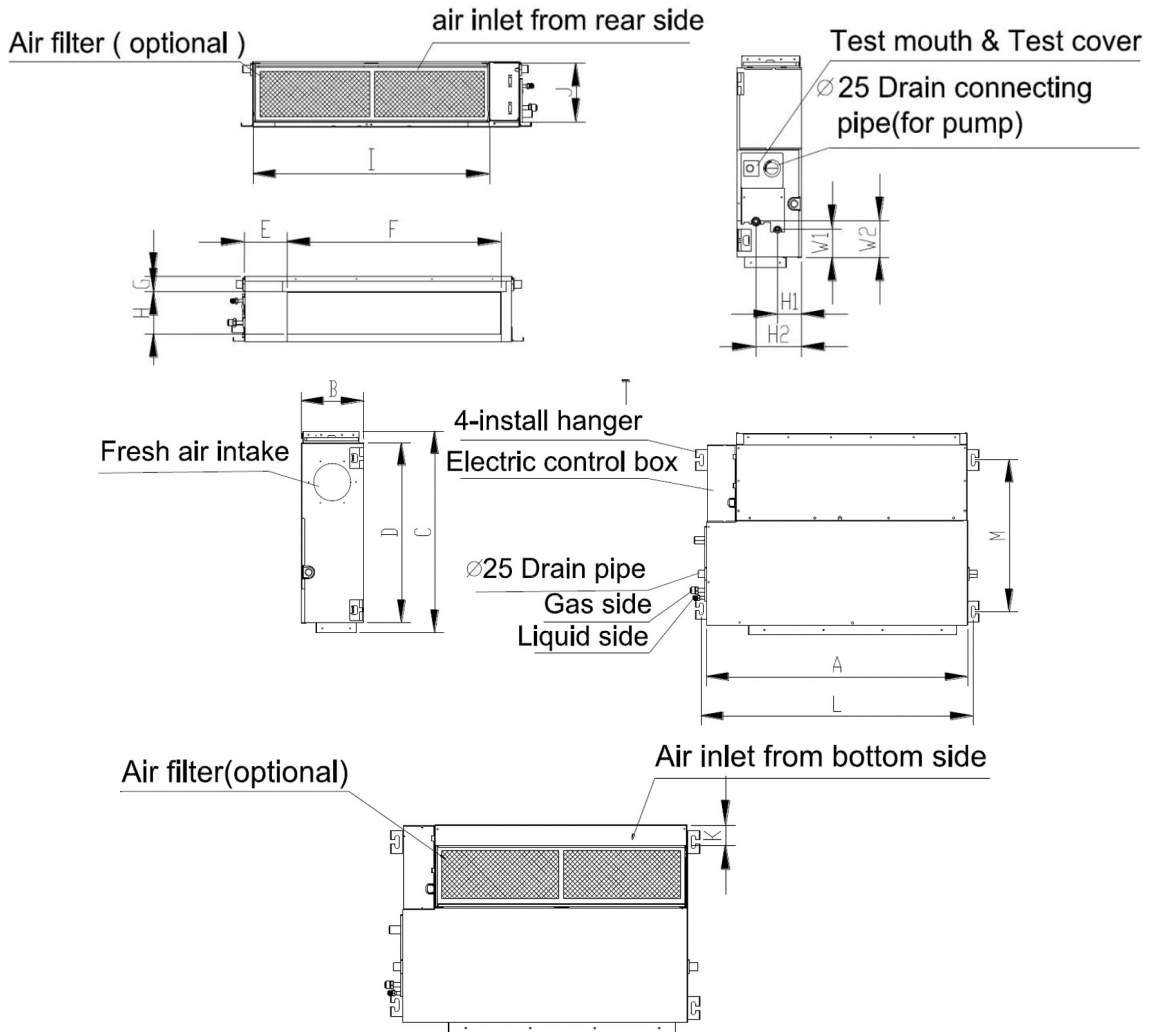
- 1. Operation mode indicator
- 2. Fan speed indicator
- 3. Left-right swing indicator
- 4. Up-down swing indicator
- 5. Panel function indicator
- 6. Main unit and secondary unit indicator
- 7. Follow me function indicator
- 8. Turbo/Auxiliary Heat function indicator
- 9. °C / °F indicator
- 10. Temperature display
- 11. Lock indicator
- 12. Room temperature indicator
- 13. Clock display
- 14. On/Off timer
- 15. Timer display

**NOTE** – Due to Lennox' ongoing commitment to quality, Specifications, Ratings, and Dimensions are subject to change without notice and without incurring liability. Improper installation, adjustment, alteration, service or maintenance can cause property damage or personal injury. Installation and service must be performed by a qualified installer and servicing agency



**SUBMITTAL DATA – FAN COIL**  
**LIHP048000T431E - LIFHC048021T431E-1**  
**SINGLE ZONE INVERTER MINI-SPLIT HEAT PUMP**

**INDOOR DIMENSIONAL DRAWINGS - INCHES (MM)**



IDU	UNIT	A	B	C	D	E	F	G	H	I	J	K	L	M	H1	H2	W1	W2
48K	mm	1200	300	874	800	123	1044	50	227	1101	280	5	1240	697	80	150	185	210
	inch	47.2	11.8	34.4	31.5	4.8	41.1	2.0	8.9	43.3	11.0	0.2	48.8	27.4	3.1	5.9	7.3	8.3

**NOTE** – Due to Lennox' ongoing commitment to quality, Specifications, Ratings, and Dimensions are subject to change without notice and without incurring liability. Improper installation, adjustment, alteration, service or maintenance can cause property damage or personal injury. Installation and service must be performed by a qualified installer and servicing agency